



Teric

Seismic Interpretation has **Evolved**

www.GeoTeric.com

GeoTeric | SEG 2018 | Anaheim

Daily Theater Schedule

Stand #2001

- 9.30am **GeoTeric 101: An introduction to the Cognitive Seismic Interpretation workflow with data links to Petrel and DSG**
- 10.30am **Interpret:** Accelerated Interpretation
- 11.30am **Validate:** Forward modelling for the everyday interpreter. A case study from the NW Shelf of Australia
- 12.20pm **Prospect Identification & De-Risking Using Cognitive Interpretation: Example from the Sergipe-Alagoas Basin, offshore Brazil**
- 1.20pm **Machine Learning** in Cognitive Seismic Interpretation
- 2.50pm **Cognitive Seismic Interpretation to Reveal** Stratigraphic plays in the Mississippian delta, Eastern GOM
- 4.00pm **Machine Learning** in Cognitive Seismic Interpretation
- 5.00pm **GeoTeric 101: An introduction to the Cognitive Seismic Interpretation workflow with data links to Petrel and DSG**

GeoTeric in SEG Technical Program

Application of deep learning for seismic horizon interpretation

Session: MLDA 1 Classification for Interpretation 1

Date: Tuesday, 16 October 2018 @ 10.10am

Location: 204B

Presenter: James Lowell (GeoTeric)

Prize Draw!!
Win

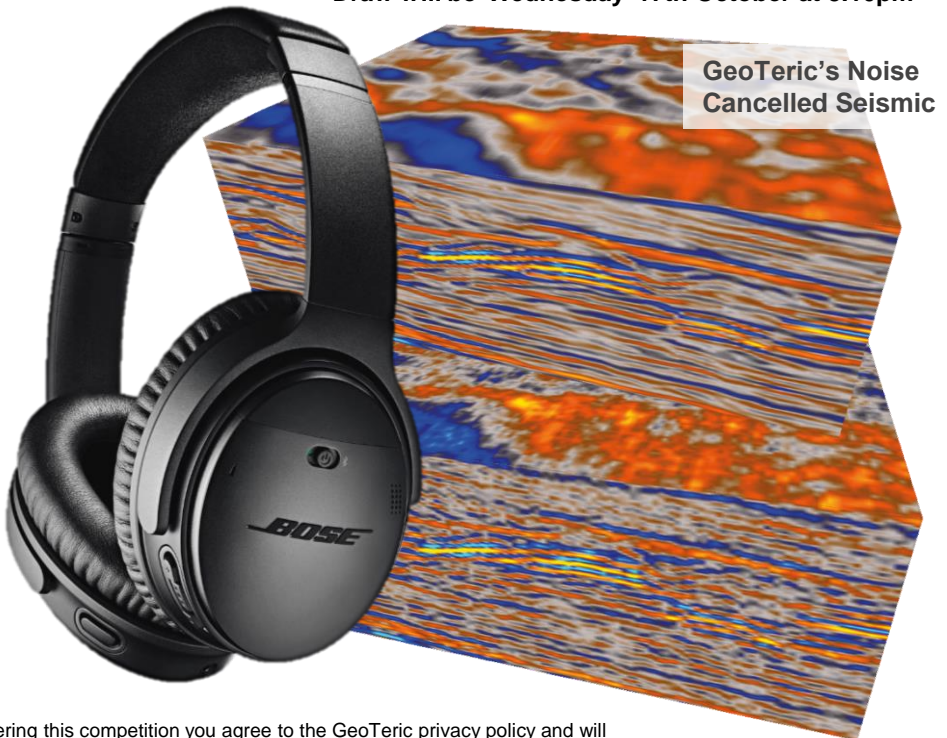
BOSE

Noise Cancelling Headphones

For your chance to win, drop your business
card into the bowl at booth #2001

Note: Names will be picked at random. If your name is called and you
are not present, we will re-draw until the prize is claimed.

Draw will be Wednesday 17th October at 3.10pm



By entering this competition you agree to the GeoTeric privacy policy and will
receive marketing email communication which you can opt out of at any time